

Sullivan Palatek®

Dedicated to Quality....

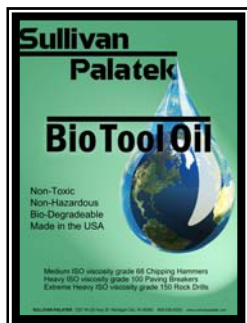
....Committed to Support



- **SWF, Weld Flux** scalers remove flux and splatter from hard surfaces.
- **SNS, Needle Scalers** (19 needles) are designed for removing paint and scale from steel and other hard or irregular surfaces and can be converted into a weld flux scaler.

ALL

- Standard hand throttle.
- Converts easily from one configuration to another
- Utilizes CLECO style steel
- Requires whip and oiler
- One year Warranty
- Made in USA



KEEP TOOLS OILED!
USE ISO 68 TOOL OIL
OR
P/N SI9106 ISO 68
BIO TOOL OIL

Specifications -SWF

Net Weight	4.5 lbs	2.05 kg
Length	10.5 in	267 mm
Bore	1 in	25 mm
Stroke	1.125 in	28.5 mm
Blows per minute	4650	4650
Chuck Sizes	1/2 Sqr	13 mm Sqr
Air Inlet (NPT)	3/8 in NPT	10 mm
Air Consumption*	12 cfm	.34 m ³ /m



Specifications -SNS

Net Weight	6.4 lbs	2.9 kg
Length	15.5 in	394 mm
Bore	1 in	25 mm
Stroke	1.125 in	28.5 mm
Blows per minute	4650	4650
Chuck Sizes	1/2 Sqr	13 mm sqr
Air Inlet (NPT)	3/8 in NPT	10 mm
Air Consumption*	12 cfm	.34 m ³ /m

FOR OPTIMUM PERFORMANCE, **DO NOT** OPERATE TOOL ABOVE **90 PSI (6 BAR)** WORKING PRESSURE.

WARNING:

ALWAYS DISCONNECT THE AIR SUPPLY BEFORE CHANGING CHISELS OR DISMANTLING THE TOOL FOR SERVICE OR REPAIR. FOR MAXIMUM SAFETY WE ADVISE THE INSTALLATION OF A SHUT-OFF VALVE AT THE END OF THE AIR LINE.

DO NOT EXCEED 100 PSI (7BAR) WORKING PRESSURE.

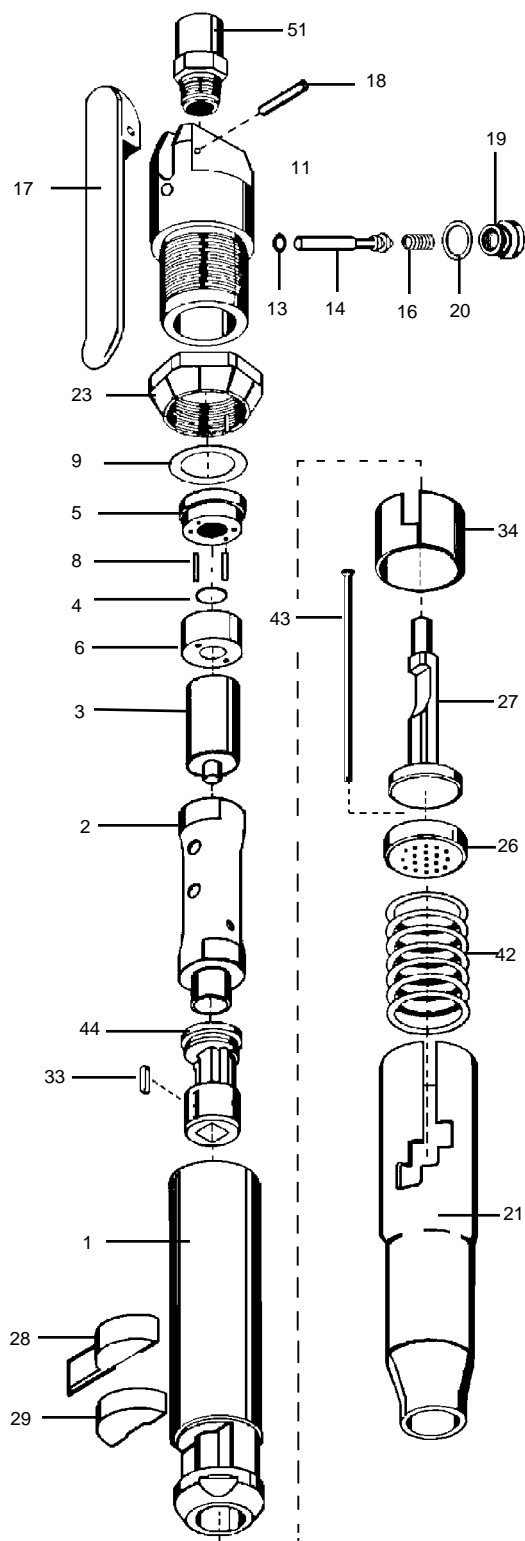
Sullivan Palatek®

1201 West US Highway 20
Michigan City, IN 46360

Ph: 800-438-6203 info@palatek.com
Fx: 800-725-6203 www.sullivanpalatek.com

PARTS LIST SCALER 10lb. class

SWF, SNS



INDEX	PART	DESCRIPTION
1	SI5001	BARREL
2	SI5002	BARREL SLEEVE
3	SI5003	PLUNGER (PISTON)
4	SI5004	VALVE
5	SI5005	VALVE SEAT UPPER
6	SI5006	VALVE SEAT LOWER
8	SI5008	VALVE DOWEL PIN (2)
9	SI5009	VALVE SHIM (opt.)
NS	SI5012	THROTTLE LEVER ASSEMBLY (index #11 through 20)
11	SI5011	BACKHEAD
13	SI5013	"O" RING
14	SI5014	THROTTLE VALVE
16	SI5016	THROTTLE VALVE SPRING
17	SI5017	THROTTLE LEVER
18	SI5018	THROTTLE LEVER PIN
19	SI5019	THROTTLE VALVE CAP
20	SI5020	THROTTLE VALVE CAP GASKET
21	SI5021	NEEDLE TUBE (ROUND)
23	SI5023	BACKHEAD LOCK RING
26	SI5026	NEEDLE HOLDER
27	SI5027	NEEDLE DRIVER
28	SI5028	RETAINER
29	SI5029	RETAINER BUFFER
33	SI5033	KEY
34	SI5034	RETAINER CLIP
42	SI5042	NEEDLE HOLDER SPRING
43	SI5043	NEEDLE 5" (19)
NS	SI5043L	NEEDLE 7" (19)
44	SI5044	SQUARE BUSHING
51	SI5036	AIR INLET BUSHING (opt.)
N/S	05019902 0004	6' WHIP W PF OILER
N/S	SI9016	BIO OIL ISO 68 1 QUART

WHEN ORDERING REPLACEMENT PARTS, FURNISH THE MODEL NUMBER(S) AND SERIAL NUMBER (S) OF YOUR TOOLS.

Sullivan
Palatek®